

What is special about Pownal?

The Pownal Comprehensive Plan Committee wants to hear from you!

What do you want to remain the same?

What needs to be changed?

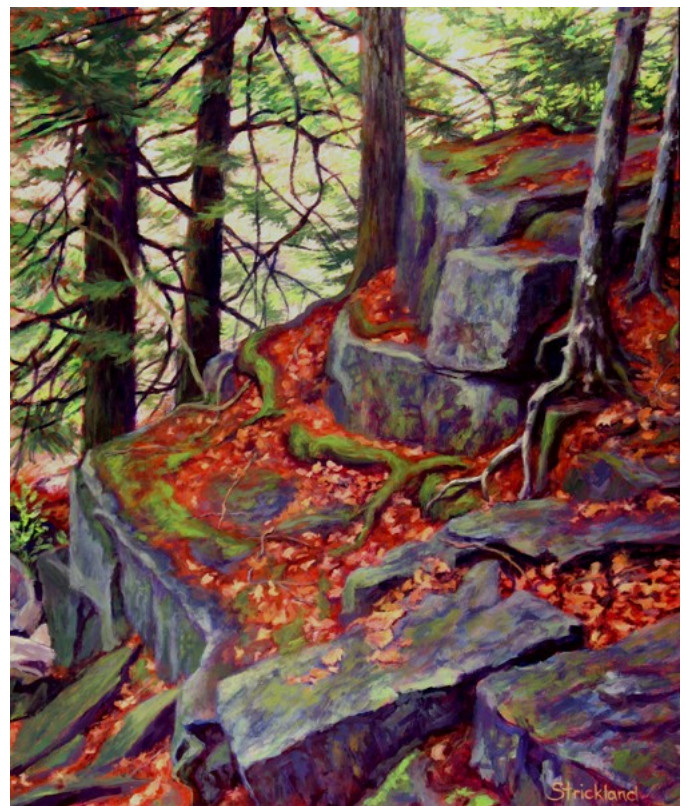
How do you envision Pownal 10 years from now?

You are invited to talk with us about the future of our town and our community. These general meetings will be held at a variety of dates and locations as listed below. We hope you will join us!

all meetings are 6:30 - 8:00pm
light refreshments will be served

- July 17 Polly Nichols Barn, 312 Hodsdon Rd
- July 24 North Pownal United Methodist Church
854 Lawrence Rd
- July 31 Mallett Hall, 429 Hallowell Rd
- Aug 7 William Allen Farm, 284 Allen Rd
(please bring a chair)
- Aug 14 Pownal Center Fire Station, Elmwood Rd
- Aug 21 North Pownal Community Club, Lawrence Rd
- Aug 28 Pownal Elementary School, 587 Elmwood Rd

FMI, contact **Kathy Hogue**
688-4153



"Granite Ledge" by Lois Strickland

Comprehensive Plan Committee Members: Marcia Bowen, Heidi Curry, Adam Haynes, Kathy Hogue, Jon Morris, Joan Mueller, Susan Peters, Russ Schmidt, Christine Watson, Coren Wheeler